

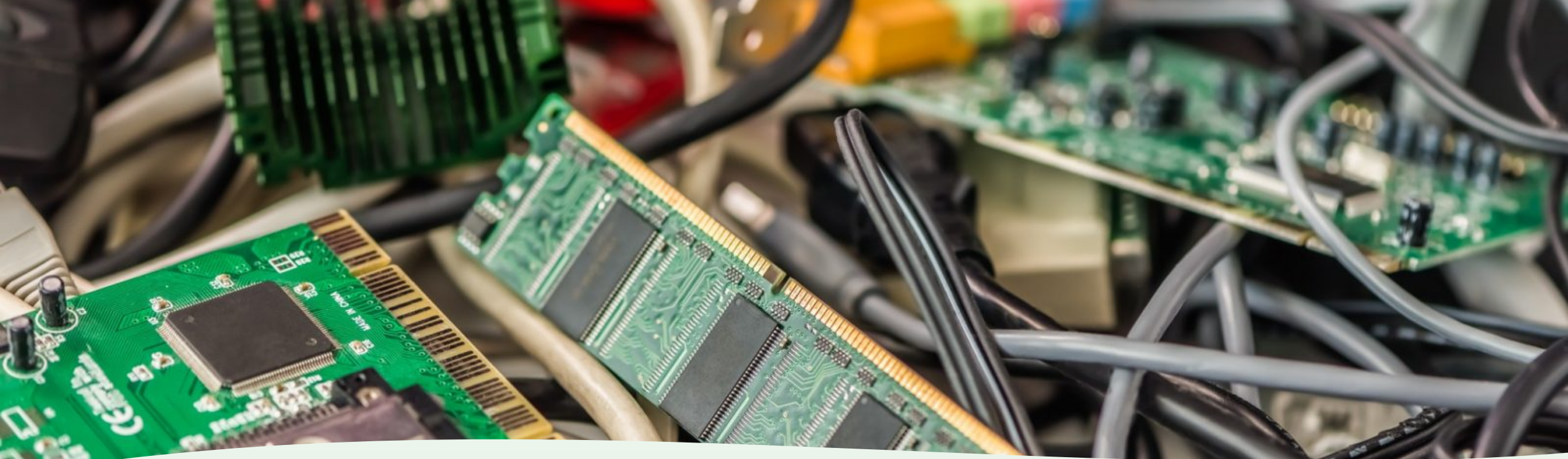


How to measure enforcement results: Experience drawn from Shipments of Waste Enforcement Actions Project

Katie Olley
Project Leader



The IMPEL LIFE SWEAP project (LIFE17 GIE/BE/000480) has received funding from the LIFE Programme of the European Union



Contents

- Shipments of Waste Enforcement Actions Project
- A brief history of waste shipment data collection
- Measuring the impact of enforcement
- Digital solution
- Issues with the digital aspects
- Recent results
- Where are we now?





EU Life-funded project
2018 to 2024

Follows on from
projects 2003 to 2018

IMPEL is the Co-
ordinating Beneficiary

Associated
Beneficiaries:

- Scotland (SEPA), England (EA),
Ireland (NTFSO), Northern
Ireland (NIEA), Slovenia
(IRSOP) and Malta (ERA)

34 participating
countries (IMPEL
members)

Project Executive: DCC
(Ireland)

H-LAB: Europol, Basel
Convention Secretariat,
ILT, WCO, OLAF



Before we get into results.....



Capacity Building
& Training



Coordinated
Inspections



Innovative
Tools



International Cooperation
& Awareness-raising



Capacity Building
& Training



Customs training: 159 officers from

Albania, Austria, Belgium, Bosnia Herzegovina, Bulgaria, Croatia, Cyprus, Czechia, Estonia, Finland, France, Germany, Greece, Iceland, Ireland, Malta, Montenegro, Netherlands, North Macedonia, Norway, Poland, Portugal, Romania, Serbia, Slovakia, Spain, Sweden, Turkey, UK

Also training input to Prosecutors and Judges through European Law Academy

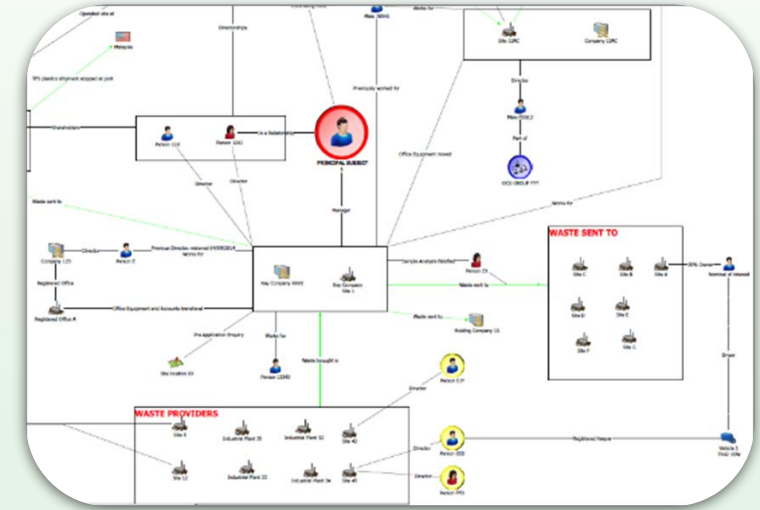
Other aspects of the project



Officer exchanges



Industry liaison



Intelligence dissemination



SWT

Portal for Environmental Enforcers

The online toolkits are free to members of relevant Competent Authorities. Please [log in or register](#) and once we verify your information, we will forward you a password to access the content.



Shipment of Waste



Wildlife



Waste Crime

The PREVENT portal provides an online depository of training and capacity building materials. This portal is a collaborative work by projects coordinated by IMPEL and executed with various consortium partners.



The PREVENT portal is a joint activity by [the WasteForce project](#) (funded by the European Union's Internal Security Fund – Police (ISFP/2017/AG/ENV/821343)), [the LIFE SWCAP project](#) (funded by the LIFE Programme of the European Union) and the SPIDERWEB Project (jointly financed by the European Union and the Federal Republic of Germany).

ABOUT

PARTNERS

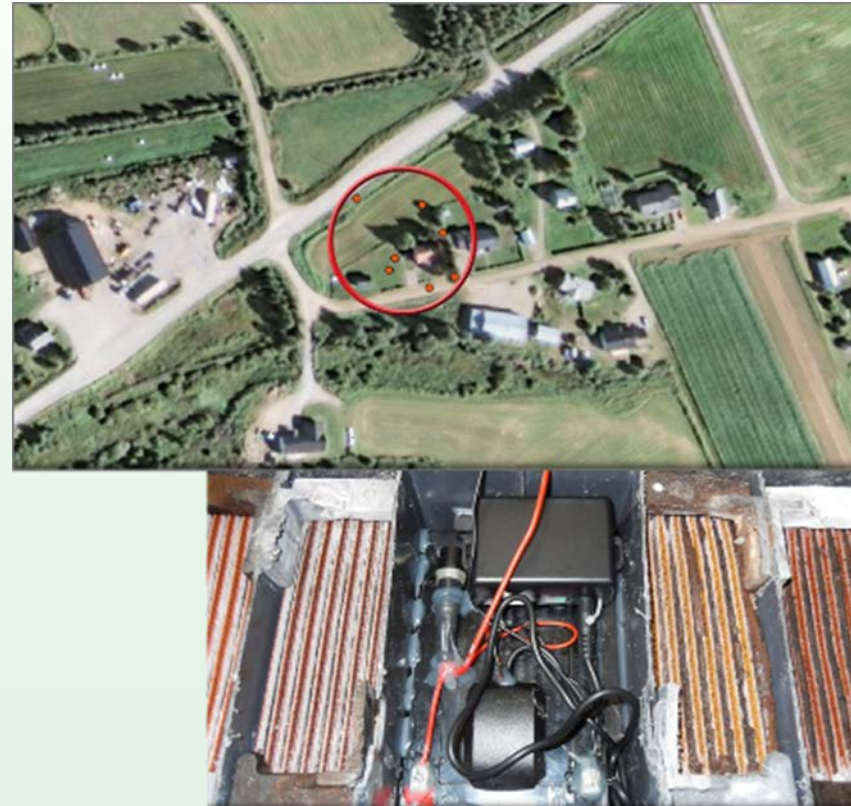
DISCLAIMER

PRIVACY POLICY

COOKIE POLICY



GPS trackers



Inspections and enforcement of waste shipments – the “frontline”

- Enforcement not only repatriations/ takeback
- Compliance monitoring and enforcement: Includes all activities undertake to secure compliance with regulations – awareness raising, inspections, warnings, fines, closure etc.
- How do we measure this?
- What happens to waste v enforcement outcome
- Who has access?





Impacts and indicators (socio-economic)

- Underlying principles to minimise negative impacts on the health and well-being on the environment and human health caused by waste shipments
- Repatriations, stopped loads
- Shipping line proxy “green fees”
- Legitimate trade (gate fees, haulage, etc.) and landfill tax income for Member States
- Rare earth metals, e.g., small mixed waste electronic items, their value may also be estimated



Waste Shipment Regulation: Article 50

- Enforcement provisions – requirements for inspections, parties to be inspected, co-operation aspects covered
- Waste Shipment Inspection Plans
- Revised Waste Shipment Regulation

Article 50

Enforcement in Member States

1. Member States shall lay down the rules on penalties applicable for infringement of the provisions of this Regulation and shall take all measures necessary to ensure that they are implemented. The penalties

Article 51

Reports by Member States

1. Before the end of each calendar year, each Member State shall send the Commission a copy of the report for the previous calendar year which, in accordance with Article 13(3) of the Basel Convention, it has

Total Results Transport Inspection Form

To be filled in for reporting on TFS inspections by the country coordinator

Mail this document to:

transfrontier@sepa.org.uk

Or post to Basecamp:

[IMPEL Basecamp](#)

1. General Information

Country:		Region:	
Authority:			
Location of Transport Inspection:			
Inspection Date (dd/mm/yyyy):			
Reference Number (country code/region code/month/number):			
Contact person:			
E-mail:			
Fax:		Phone:	
Country Coordinator:			

2. Cooperation during transport inspection

National Cooperation		Name of Organisation
	Competent Authority	
	Cooperation with Police	
	Cooperation with Customs	
	Others	
International Cooperation		Country & Name of Organisation
	Cooperation with Inspectors	
	Cooperation with Police	
	Cooperation with Customs	
	Others	

3. Selection of Inspected Transports

Selection Method (tick all that apply)	
	Pre-selection based on Intelligence (high risk transport only has been

Spreadsheets!

- Manual (double/ triple handling)
- Open to interpretation
- Different languages
- Mixed reporting
- Outcome of cases determined by subsequent surveys



The “ideal”

“Live”

- Live inspection data is reported
- No double recording
- Digital system
- Easily determine common routes, modus operandi, high risk. players?
- Record all inspections (not only where violation found)
- Complete record

Informative

- Cross-referenced with multiple data sources e.g., customs data, shipping destinations, commodity prices, permit records
- Provides intelligence
- Use of AI?

Iterative

- Adapt mandatory Waste Shipment Inspection Plans accordingly (frequency and depth of inspections proportional to risk)
- Deals with planned and reactive work
- Helps provides informed expectations about the volume of illegal shipments overall



The reality

National context is everything

- Multiple enforcement bodies with different responsibilities

Organisational structures

Different reporting rules and conventions

Data vocabulary

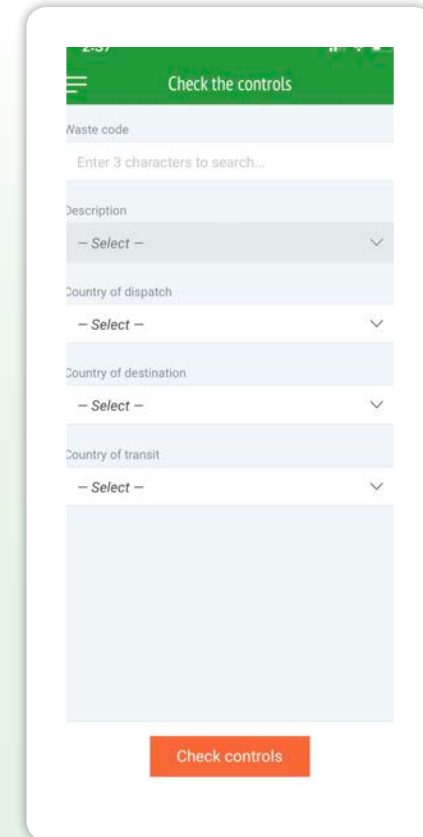
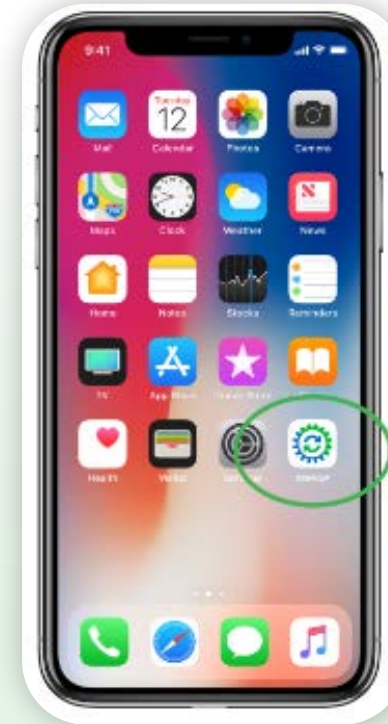
Different stages of enforcement outcomes

Different systems (including paper-based recording)



Transforming practices

- ▶ App for 'on-the-road' for inspectors, regulators and law enforcement officers
- ▶ Standardised data recording at shipment level
- ▶ Multi-lingual
- ▶ References to legislation, problematic waste streams, waste codes
- ▶ Available in the Android and Apple app stores and as web-version for desktop use
- ▶ Easy to use backend system
- ▶ Reporting
- ▶ Allows comparisons and intelligence gathering



Check the controls

Waste code
Enter 3 characters to search...

Description
- Select -

Country of dispatch
- Select -

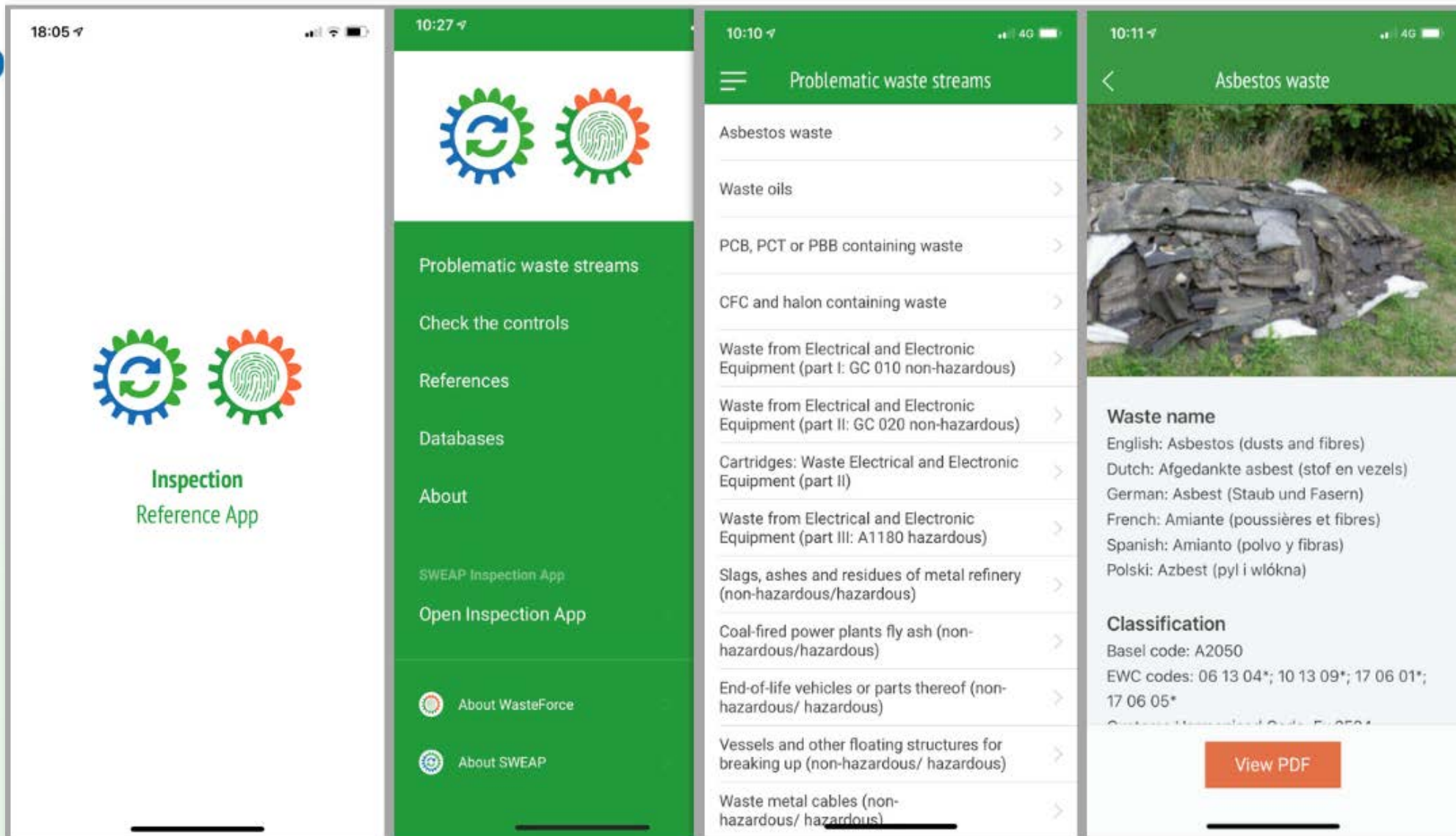
Country of destination
- Select -

Country of transit
- Select -

Check controls



Reference section

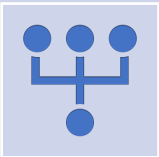




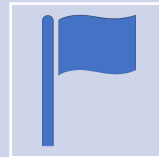
Collect, report and store inspection data online either in field or office



Take photos and add them to inspection form



Can also bulk upload inspections and download structured reports
Monitor against inspection plan



Flagging system to other authorities



Directly feeding certain data into other systems via API-file (e.g. Spotfire)
Provides annual reports for submission to EU



Available for intelligence analysis if authority agrees and provision to Europol



SWEAP

Example of App data fields & replies which are stored within the CMS ...



The image displays four sequential screenshots of the SWEAP mobile application, illustrating the 'New Inspection' workflow:

- Step 1:** 'New Inspection - Step 1'. Shows a form with fields for 'Selection method', 'Type of check', 'Name of site', 'Address of site', 'Legal site' (Yes/No/Unk), 'Postal number', and 'Type of site'.
- Step 2:** 'New Inspection - Smart select'. Shows a search bar and a list of 'Addresses of site' with 'Example' entries.
- Step 3:** 'New Inspection - Step 3'. Shows a form with fields for 'Type of waste', 'Description of waste', 'Quantity of waste', 'Unsorted waste' (Yes/No), 'Barcode (EAN code)', 'EAN code', 'SECC code', 'Concerns' (Impact/Travel/Export), and 'Packaging'.
- Step 4:** 'New Inspection - Step 4'. Shows a form with fields for 'Has the shipment been outflow?' (Yes/No/Not applicable), 'Answer MR information' (Yes/No/Not applicable), 'Answer CR information number', 'Is there a risk?' (Yes/No/Further investigation required), 'Type of incident', 'Who is responsible?' (Site/Other party), and 'Further action'.

- 59 fields (6 pre-set)
- Authorities can add fields & choose which non-nominal fields to share (visualisation)



Digital solution

- APIs for transfer of data
- Further integration into Electronic Data Interchange (EDI) possible to check against planned routes
- Accords with recommendations: [OPFA-Waste Report \(Operational Facility for Fighting Illicit Waste Trafficking\)](#)



Real Time Data



Data Visualisation



Reports



Data Security



Paperless



Cost-effective

The Inspection App has been extensively tested and is currently in use throughout Europe:



76,000+
Inspections



195
Inspectors



53
Participating authorities



10+
Languages



What the App does not do

- Solve data sharing but facilitates it by flagging system
- Case management (but does allow officer to estimate level of severity of offence and likely outcome) and allow data to be updated
- Confirm repatriation of waste (but this could be added)



Hosting and data exchange

- Data Security and Protection/ ISO 27001:2013: risk assessment based on type of data
- No storage using Microsoft Azure
- GDPR- considerations: Data Controllers and Data Processors
- Access requirements
- High level commitment and confidence needed in the system
- How to deal with nominal data – who can access this, for what purpose and how can it be exchanged? (e.g., only via secured servers outside system).
Europol involvement



Visualisation of inspection data

Navigation

Inspection Portal

Data Selector

Period
01/01/2012 05/10/2023
 Include empty values

Switch to Inspections by Violations

Inspection Reference
Type to search in list
(All) 33283 values
A-A-2022-03-22-001
A-A-2022-03-22-002
A-A-2022-03-22-003
A-A-2022-03-22-004

Export Control
Type to search in list
(All) 8 values
Annex VII form
Article 18 Controls
More information is n...
Multiple Controls - ch...

End Destination - circle size by total inspections

Select a location on the map to reduce the table below to associated inspections or select 'See Route Details' for more information

[See Route Details](#)

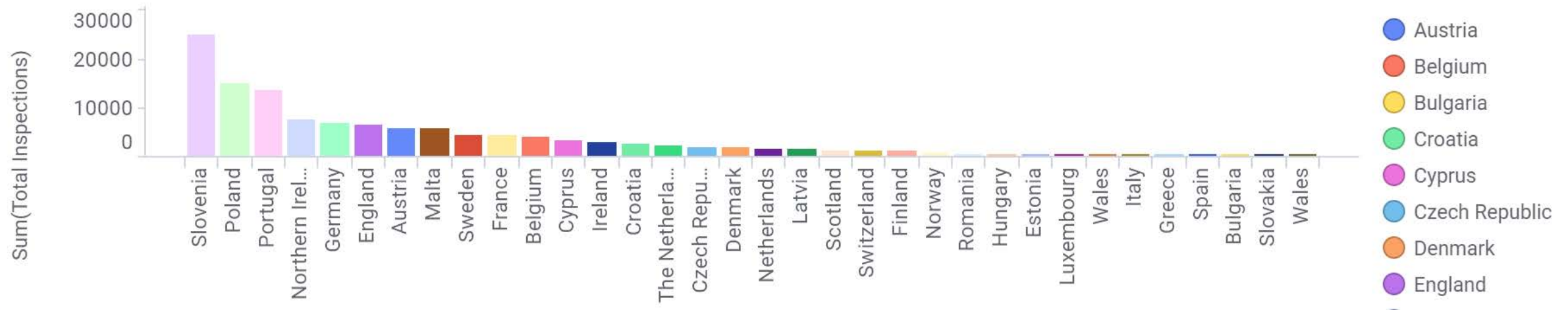
Inspection Summary

Select a single inspection report then select 'See Inspection Details' below for more information

Reporting Country	Inspection Date	Inspection Type	Dispatch Country	Destination Country	Waste Type	Treatment	Violation	Tonnes
Cyprus	01/01/2014	Transport in...	Cyprus	Greece	WEEE		Yes	
Cyprus	01/01/2014	Transport in...	Cyprus	Greece	WEEE		Yes	
Cyprus	01/01/2014	Transport in...	Cyprus	Greece	WEEE		Yes	
Cyprus	01/01/2014	Transport in...	Cyprus	Greece	WEEE		Yes	
Cyprus	01/01/2014	Transport in...	Cyprus	Greece	WEEE		Yes	
Cyprus	01/01/2014	Transport in...	Cyprus	Greece	WEEE		Yes	
Cyprus	01/01/2014	Transport in...	Cyprus	Greece	WEEE		Yes	
Cyprus	01/01/2014	Transport in...	Cyprus	Greece	WEEE		Yes	
Cyprus	01/01/2014	Transport in...	Cyprus	Greece	WEEE		Yes	
Cyprus	01/01/2014	Transport in...	Cyprus	Greece	WEEE		Yes	

[See Inspection Details](#)

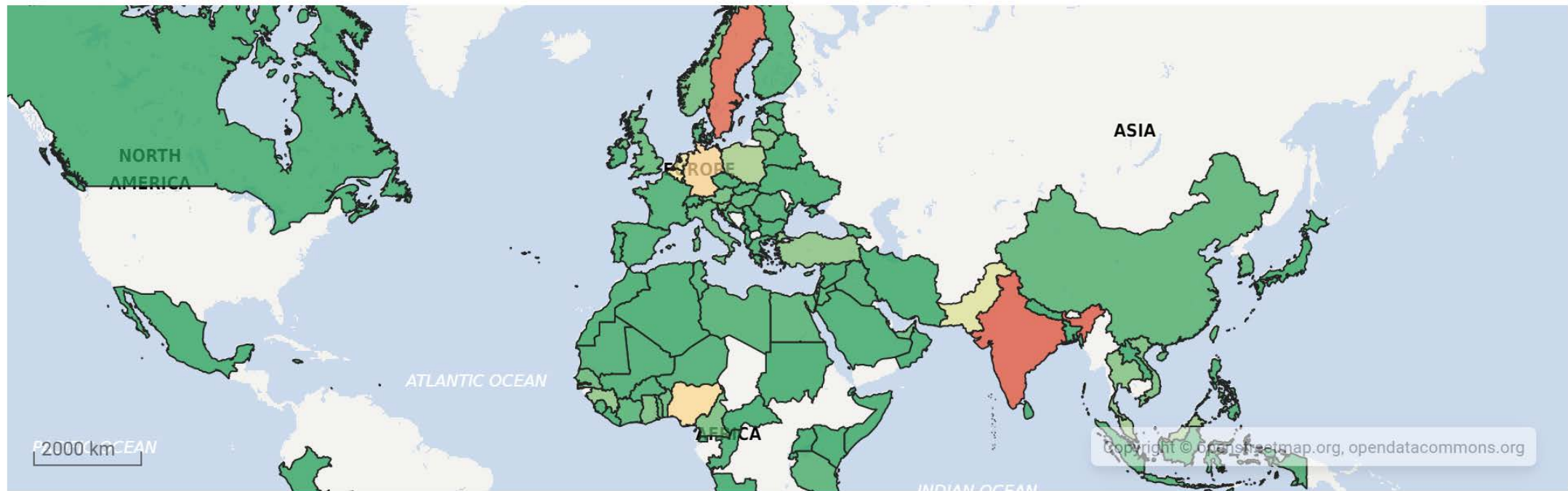
Number of Inspections per Reporting Country



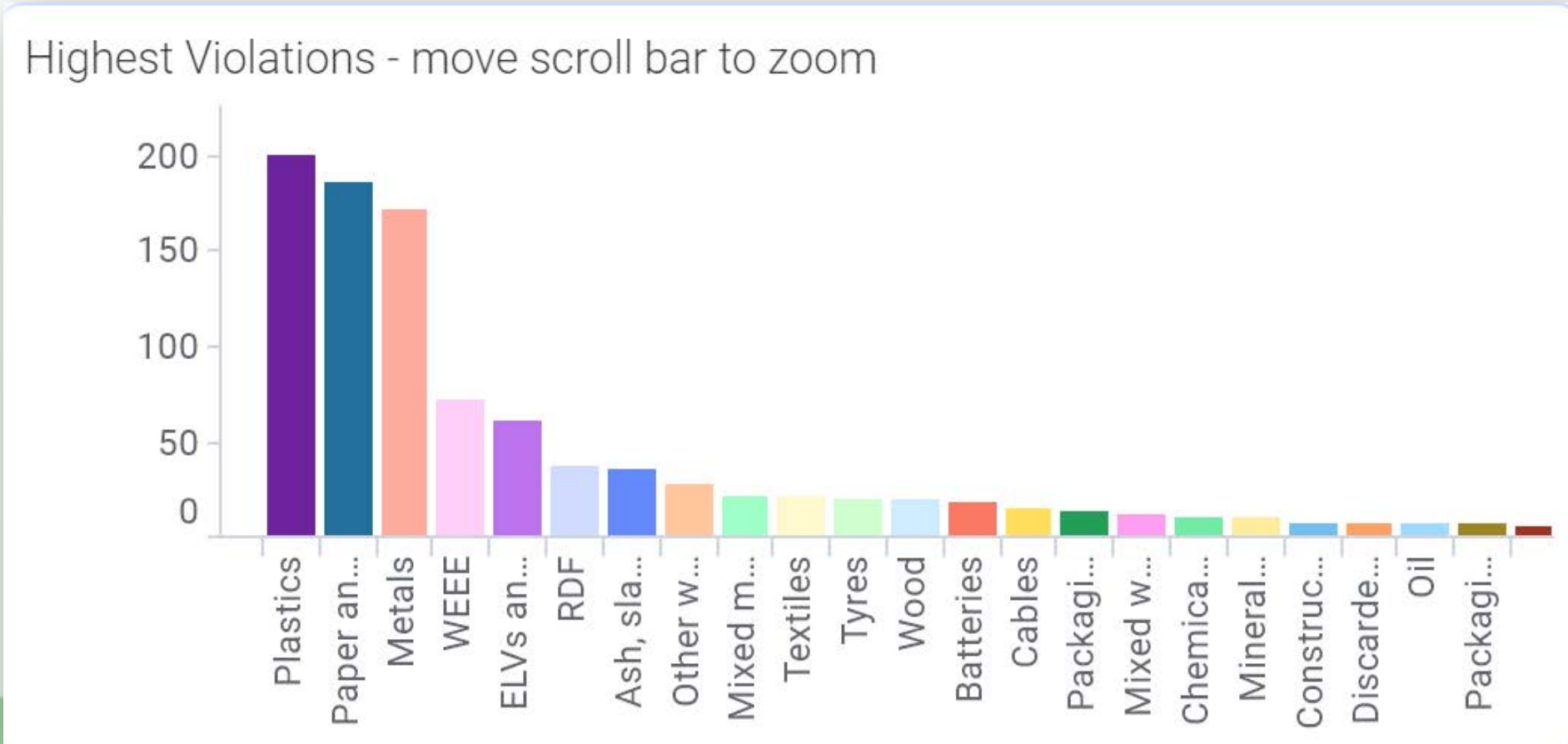


Destinations of illegal shipments (2022-23)

Destination Country - violations as a proportion of the total (%)



2022-23 – waste types shipped illegally



Detection rates for shipments to western and central Africa

End Destination - circle size by violations and associated breakdown by colour

Select a location on the map to reduce the table below to associated inspections or select 'See Route Details' for more information





GPS locations of inspections



- Where organisation permits, officers can turn on their GPS location
- Starting to develop
- Combine with route data





Next steps

Hosting

Webinars

Best Practice meeting

Exchanges

Policy paper

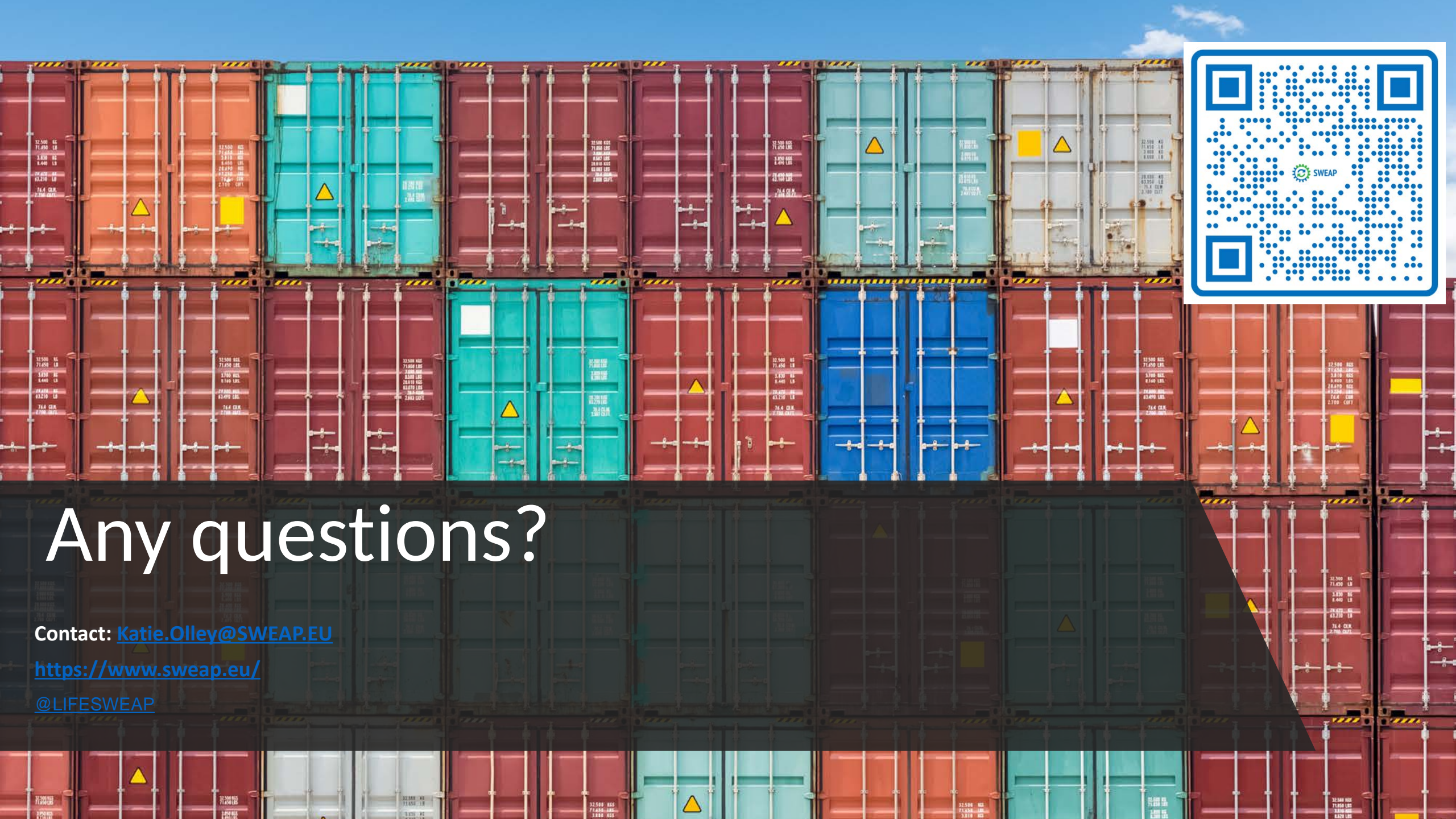
'Onboarding' of additional authorities

Translations

Link up to Commission's EDI

Global and regional networking





Any questions?

Contact: Katie.Olley@SWEAP.EU

<https://www.sweap.eu/>

@LIFESWEAP